

St. Clair County Community College



Facilities Master Plan



Campus Analysis

Observing Today and Envisioning Tomorrow

Looking at the structure and patterns of the existing campus uncovers what gives SC4 its character and sense of place. The Facilities Master Plan builds upon this understanding to strengthen what's best about the College while modifying the campus to improve its function, circulation and use by the College community.



Campus Analysis



The Future Campus

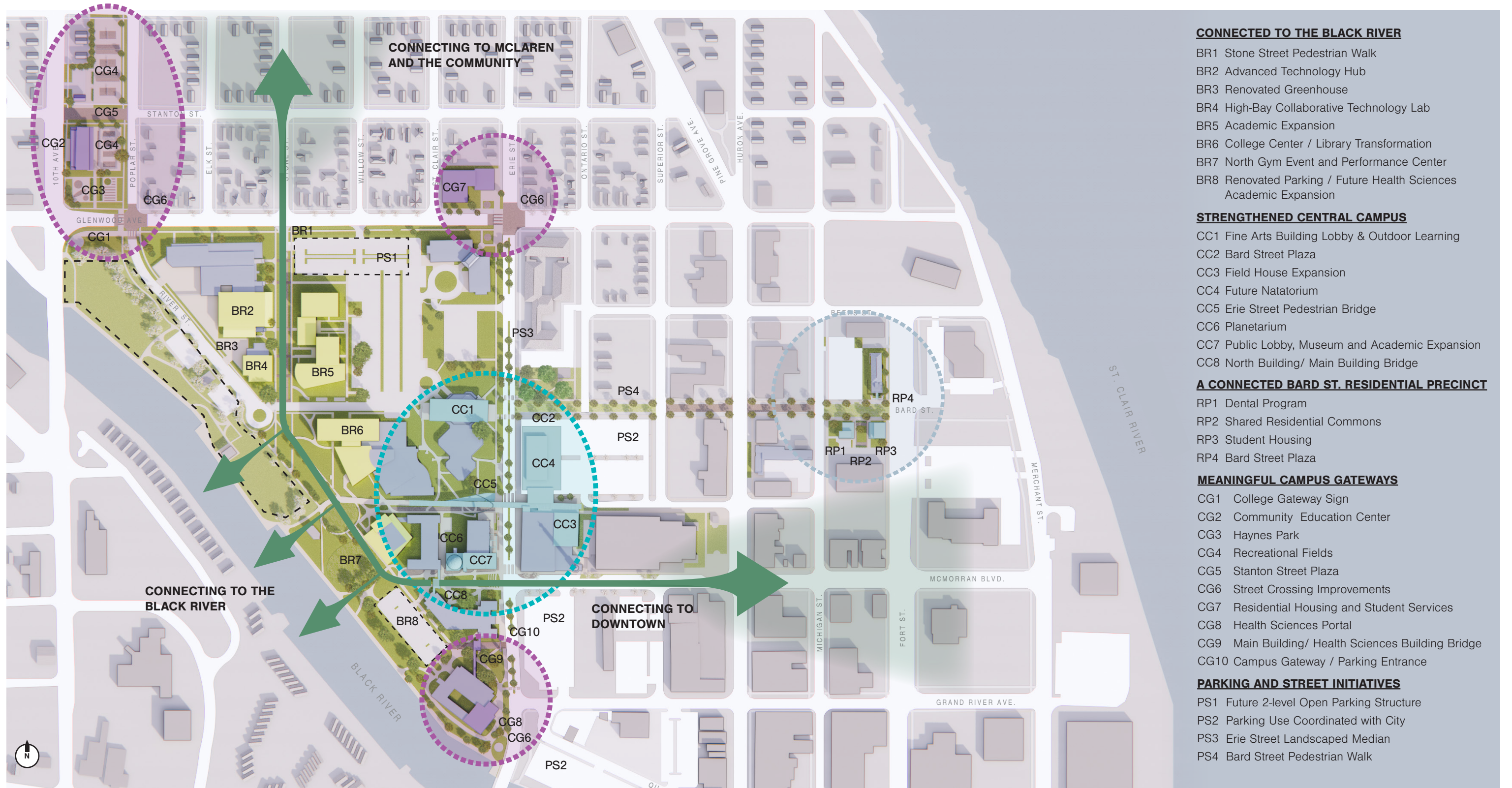
Creating Campus Places that support the College's Strategic Vision

Building upon the organization of the existing campus, a vision for the future looks at how buildings, open spaces and infrastructure might strengthen what's best about the College, tying it even more closely to its riverfront site, its neighboring residential communities, and the energy of downtown Port Huron.



Campus Vision

The Plan first identifies projects along a “riverfront spine” which connect both McLaren Hospital, the Glenwood Community and Downtown Port Huron to the College and the Black River. It then identifies projects that strengthen critical campus precincts, whether at the traditional campus at Erie Street or the emerging residential precinct along Bard Street. The Plan also recognizes three major campus gateways and imagines how community-facing programs, wayfinding and signage enhance the College at its critical edges.



CONNECTED TO THE BLACK RIVER

- BR1 Stone Street Pedestrian Walk
- BR2 Advanced Technology Hub
- BR3 Renovated Greenhouse
- BR4 High-Bay Collaborative Technology Lab
- BR5 Academic Expansion
- BR6 College Center / Library Transformation
- BR7 North Gym Event and Performance Center
- BR8 Renovated Parking / Future Health Sciences Academic Expansion

STRENGTHENED CENTRAL CAMPUS

- CC1 Fine Arts Building Lobby & Outdoor Learning
- CC2 Bard Street Plaza
- CC3 Field House Expansion
- CC4 Future Natatorium
- CC5 Erie Street Pedestrian Bridge
- CC6 Planetarium
- CC7 Public Lobby, Museum and Academic Expansion
- CC8 North Building/ Main Building Bridge

A CONNECTED BARD ST. RESIDENTIAL PRECINCT

- RP1 Dental Program
- RP2 Shared Residential Commons
- RP3 Student Housing
- RP4 Bard Street Plaza

MEANINGFUL CAMPUS GATEWAYS

- CG1 College Gateway Sign
- CG2 Community Education Center
- CG3 Haynes Park
- CG4 Recreational Fields
- CG5 Stanton Street Plaza
- CG6 Street Crossing Improvements
- CG7 Residential Housing and Student Services
- CG8 Health Sciences Portal
- CG9 Main Building/ Health Sciences Building Bridge
- CG10 Campus Gateway / Parking Entrance

PARKING AND STREET INITIATIVES

- PS1 Future 2-level Open Parking Structure
- PS2 Parking Use Coordinated with City
- PS3 Erie Street Landscaped Median
- PS4 Bard Street Pedestrian Walk

Campus Planning Themes

The plan reflects the College's commitment to academic focus, collegiate level student experience, a welcoming campus, and opportunities for greater community connection. To realize these aspirations, development plans for the campus are grounded in four themes identified as being critical to the character of the campus today and as presenting opportunities for impactful change in the future.



THEME (BR) CONNECTED TO THE BLACK RIVER

The College began and grew in buildings that front Erie Street and face towards the City's downtown, but its commitment to a welcoming, student-focused campus suggest the College should create new campus open spaces and buildings connected to the Black River.



THEME (CC) A STRENGTHENED CENTRAL CAMPUS

The traditional core of the campus retains its outward, community-oriented focus with buildings that celebrate education, athletics, and the performing arts. The plan should take further opportunities to welcome students and the community to campus.



THEME (RP) A CONNECTED BARD STREET RESIDENTIAL PRECINCT

A combination of existing student housing sites and recently acquired property for further housing and a new dental hygiene program create a new "precinct" for the campus. The plan suggests strengthening this precinct with common space for students while using a combination of pedestrianization, wayfinding, landscape and lighting to enhance travel along Bard Street towards the central campus.



THEME (CG) MEANINGFUL CAMPUS GATEWAYS

Campus gateways offer SC4 moments to introduce its campus, its people, and its educational opportunities to the broader community. Through careful use of signs, landscaping and student gathering, the activity and impact of the College can be focused at its critical edges.

CONNECTED TO THE BLACK RIVER



Strengthening the College’s connection to the Black River starts at its edges. Over the past decade, SC4 has reclaimed two city streets—McMorran Boulevard and Stone Street—as new pedestrian open spaces for the College. These streets not only welcome the community onto campus by reaching out to the Glenwood neighborhood and McLaren Health Care to the north and towards downtown to the east but converge together along the riverfront.

The plan proposes that sites along the “spine” connecting these pedestrianized streets are best suited for the future growth of the College. When fully developed, each street will offer a two-sided “walk” combining academic buildings, landscape, and outdoor learning environments.

The ends of each walk open onto something unique to SC4, a river-facing park. This park is animated by both existing student-centric spaces like the College Center and Library and new public facing projects including the transformation of the North Building Gym into a performing arts center and amphitheater offering year round concerts, lectures and events.

CONNECTED TO THE BLACK RIVER

- BR1 Stone Street Pedestrian Walk
- BR2 Advanced Technology Hub
- BR3 Renovated Greenhouse
- BR4 High-Bay Collaborative Technology Lab
- BR5 Academic Expansion
- BR6 College Center / Library Transformation
- BR7 North Gym Event and Performance Center
- BR8 Renovated Parking / Future Health Sciences Academic Expansion

North Gymnasium Event and Performing Center - Exterior View (BR7)

Where campus and community meet the water's edge

The existing North Building gymnasium is an under-utilized campus asset, but its riverfront location suggests the heightened role it can play in the campus's future. The plan envisions its transformation into a performing arts center whose river-facing stage allows both indoor and outdoor performances—energizing the public parkland southwest of the College and providing a destination for both the SC4 and broader community. An outdoor amphitheater surrounded by terraced grass lawns provides seating during performances with the potential for hosting outdoor events or even wintertime activities when not in use for concerts.



North Gymnasium Event and Performing Center - Interior View (BR7)

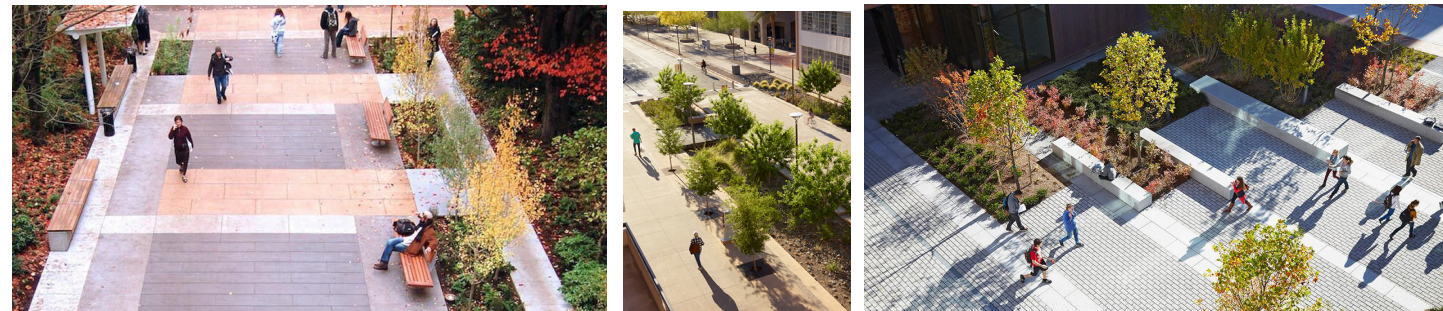
A stage for arts, and shared experiences

The interior of the new performing arts center provides concert seating with wrap-around box seating on its sides, increasing the intimacy of the experience and the connection between performers and audience. The operable glass wall behind the performers opens to the amphitheater beyond, but even when closed celebrates the park and river beyond as a backdrop for all performances. Existing windows provide additional natural light to the hall and nod to the existing architecture and previous use of the building.



Stone Street Pedestrian Walk (BR1)

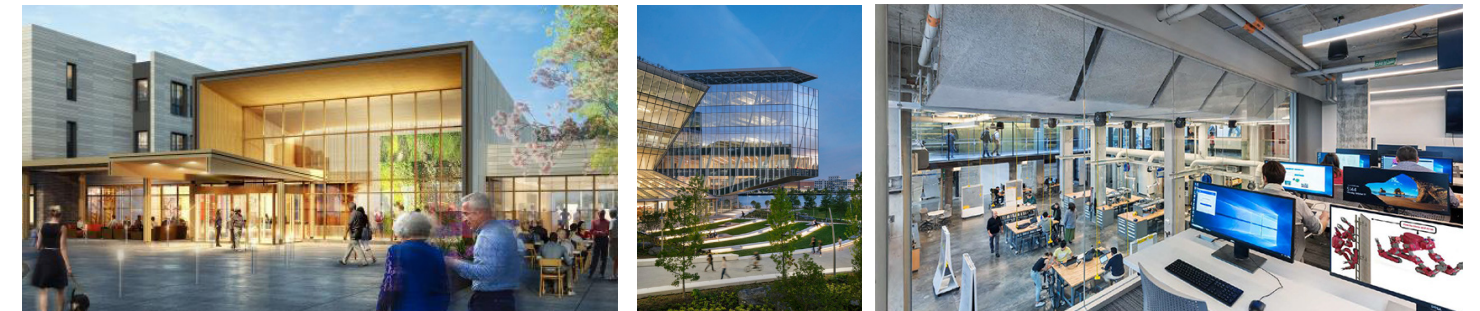
Creating a vibrant pedestrian corridor and central campus gathering place



The pedestrianization of the on-campus portions of Stone Street provide a new gateway axis connection reaching north to the Glenwood neighborhood and McLaren Health Care and south towards the Black River. Its new pedestrian and open spaces also substantially improve the connections between the Applied Technology Center and the campus precinct along Erie Street.

Advanced Technology Hub (BR2)

Expanding collaborative labs and linking innovation spaces to the landscape



The pedestrianized Stone Street together with renovation projects along the Black River offer opportunities to rethink how the Applied Technology Center might best connect to campus. In addition to labs teaching specific trades, the Plan recommends creating a technology hub filled with natural light and connected to campus promoting collaboration between programs and the further use of the digital resources at the forefront of advanced manufacturing today.

Renovated Greenhouse (BR3)

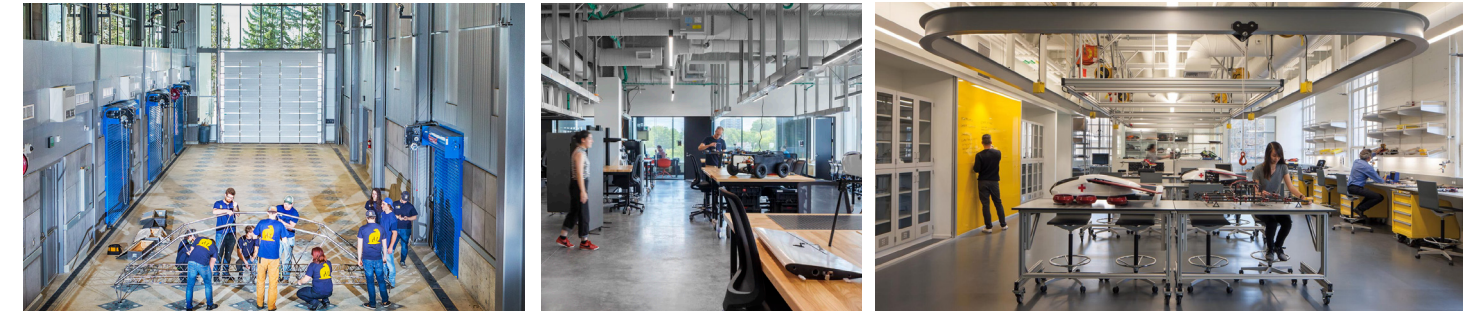
Modernizing plant science facilities with light-filled teaching and research space



The existing Applied Technology Center greenhouse can become a modern and accessible space for teaching and research, a resource that is needed on campus. Renovating or expanding the existing facility is one way to strengthen the connection between existing programs in the building and programs across campus.

High-Bay Collaborative Technology Lab (BR4)

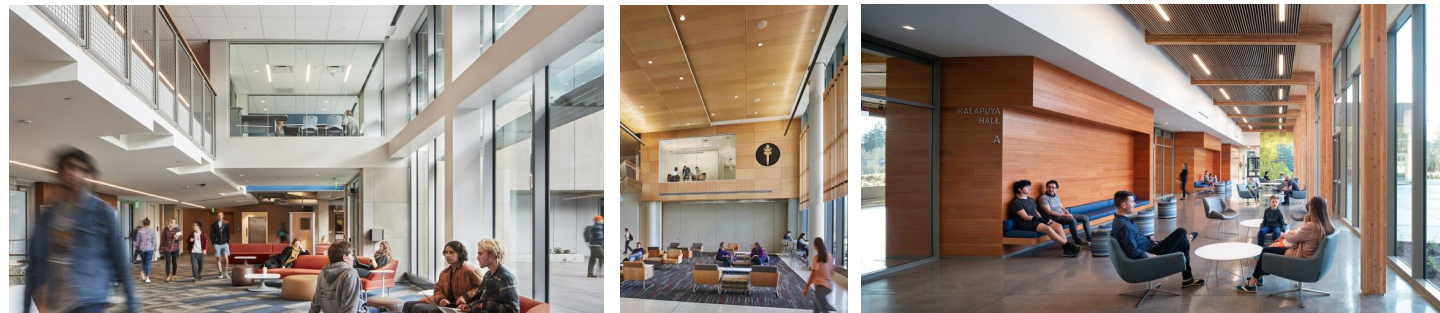
Providing flexible high-bay labs for advanced manufacturing and applied research



The existing warehouse space can continue to provide receiving and maintenance space for the College while dedicating additional renovated high-bay space for collaborative technology, engineering, science and CIS programs. Drone engineering and testing, robotics and student fabrication space can help this building contribute to creating a student-focused hub along the pedestrianized Stone Street corridor.

Academic Expansion (BR5)

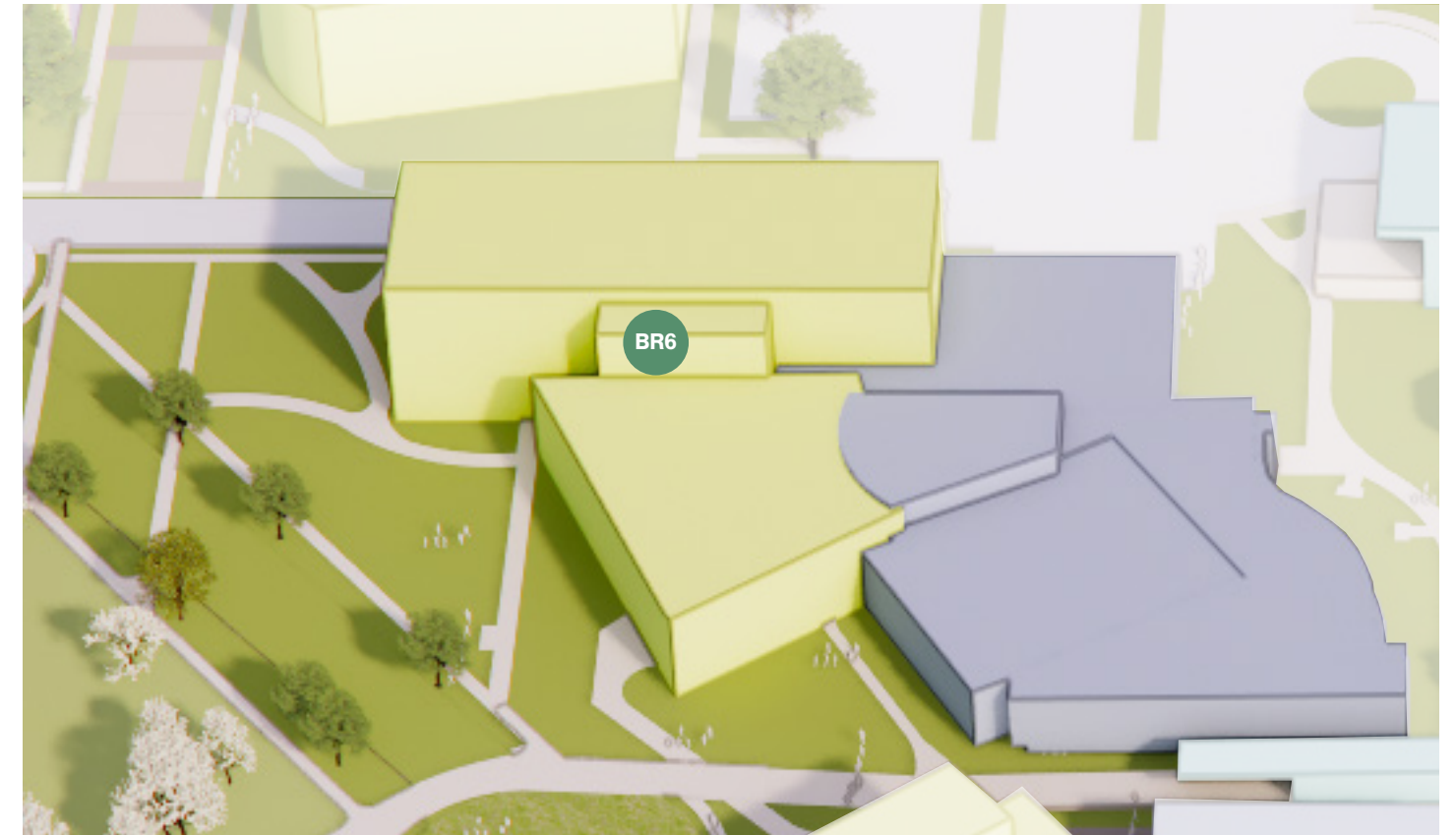
Adding flexible classrooms and faculty space to support enrollment growth



To strengthen the pedestrian experience along Stone Street while providing space for future academic expansion to meet the needs of a growing campus, the plan proposes a significant new academic building on the western edge of SC4's central parking lot. Adjacent to both the technology resources of Applied Technology Center and teaching and learning opportunities in the College Center and Library, a new building with flexible classrooms, instructional technology, faculty offices and collaboration spaces can assist the College in accommodating the future growth of its student population while accommodating new programs and initiatives on campus.

College Center / Library Transformation (BR6)

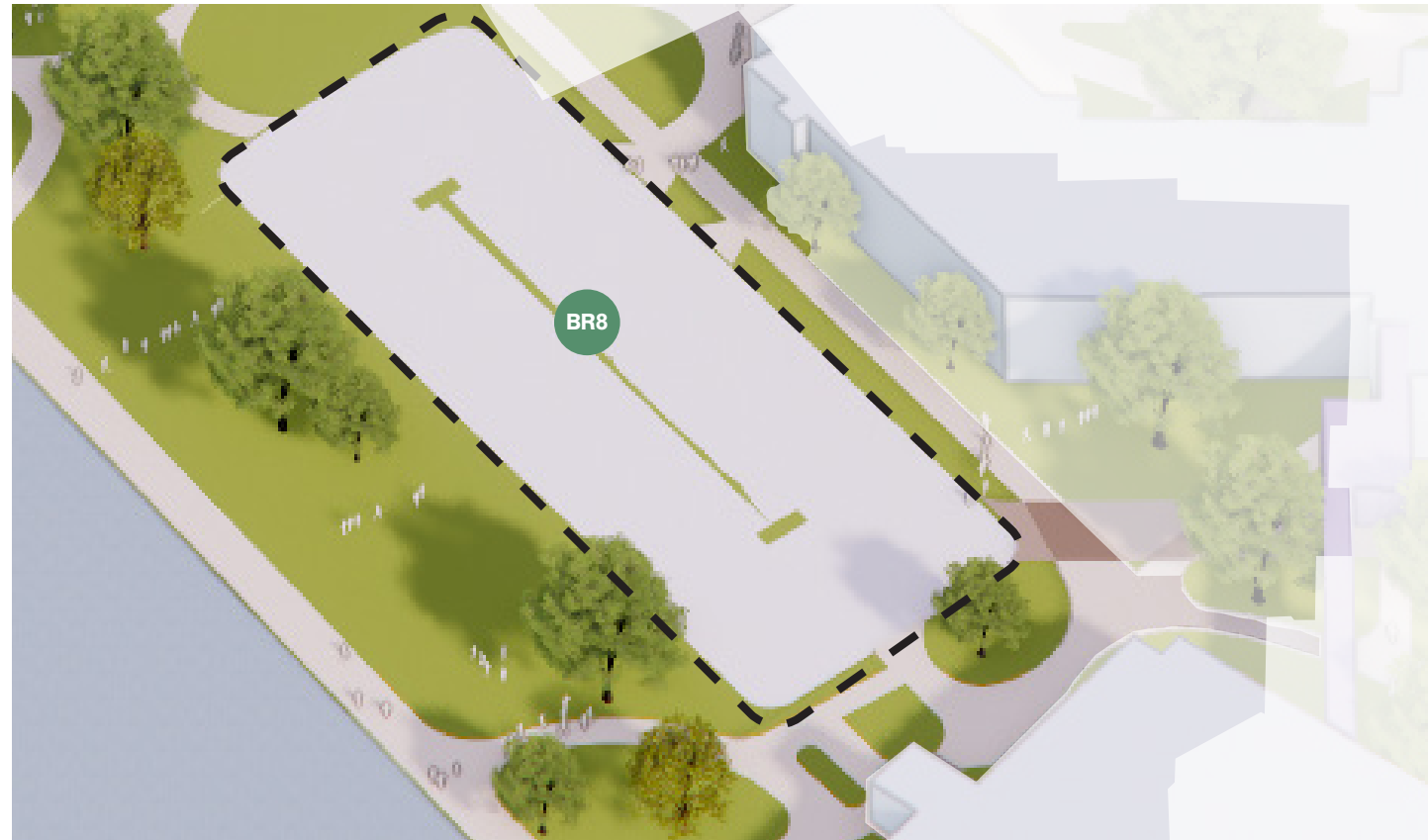
Reimagining the library as a student hub for learning, collaboration, and community



Today the College Center divides its library and testing facilities, located in the south portion of the building, from its student union in the north part of the facility. As the role of the college library continues to evolve beyond its focus on media and traditional learning skills, joining spaces for learning with those for student activities and gathering can solidify the College Center as a center for learning on the future campus.

Renovated Parking / Future Health Sciences Academic Expansion (BR8)

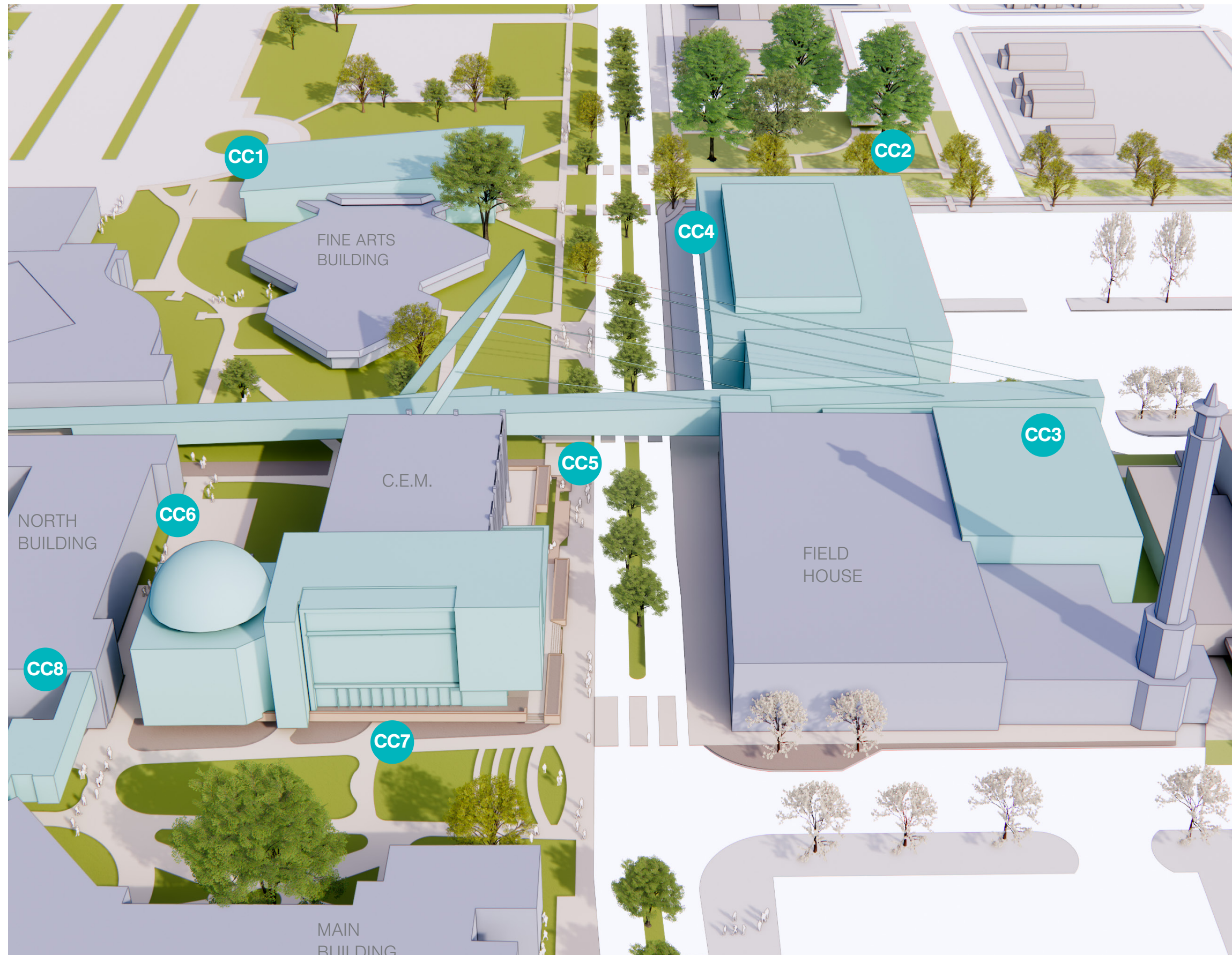
Meeting current needs while preparing for growth in health sciences



To provide room for initiatives along the riverfront and to improve access to the Health Sciences Building (HSB), the plan proposes rerouting access to the parking lot by connecting it directly to Erie Street. However, this riverfront site could accommodate a new facility to expand the range of programs and teaching spaces available to the health and nursing departments.



A STRENGTHENED CENTRAL CAMPUS



The precinct of buildings along Erie Street is not only the traditional heart of campus, but its orientation towards downtown Port Huron and its location on a prominent urban axis through the city make it an important place where many residents connect to the College. Reinforcing that connection, many of its programs are explicitly community facing, whether it's the growing natural history collection in the C.E.M. Building, the calendar of exhibitions, concerts and performances available in the Fine Arts Building, or the events and recreational opportunities available in the Field House.

The projects suggested in the plan amplify the interaction between successful academic programs in the arts and sciences with community programs that celebrate learning outside of the classroom.

STRENGTHENED CENTRAL CAMPUS

- CC1 Fine Arts Building Lobby & Outdoor Learning
- CC2 Bard Street Plaza
- CC3 Field House Expansion
- CC4 Future Natatorium
- CC5 Erie Street Pedestrian Bridge
- CC6 Planetarium
- CC7 Public Lobby, Museum and Academic Expansion
- CC8 North Building/ Main Building Bridge

Science Building Expansion and Planetarium (CC6-7)

A new front door for discovery and innovation

With its interdisciplinary departments in math and the sciences, large classrooms, Challenger Center, and natural history collections, almost all visitors to campus engage with the C.E.M. Building. The plan proposes a group of projects that build upon the public nature of this important campus building. A new public entrance to a formalized museum and planetarium welcomes the community to campus while enclosing a portion of the existing raised plaza provides all-weather spaces for students to gather and socialize before and after class. The renovated building also provides new labs, classrooms and spaces for faculty collaboration.



Erie Street Bridge and Field House Expansion (CC3,CC5)

Linking academics, athletics and the riverfront

A new pedestrian bridge across Erie Street not only provides accessible and protected connections to the North Building, C.E.M. Building and expanded Field House but provides an exciting and iconic symbol for optimism and vision of the College and the broader Port Huron community. The bridge also provides a natural accessible connection between downtown, parking resources at McMorran Place, and the expanded offerings along the riverfront, including the transformed North Building Performing Arts Center.



Fine Arts Building Lobby & Outdoor Learning (CC1)

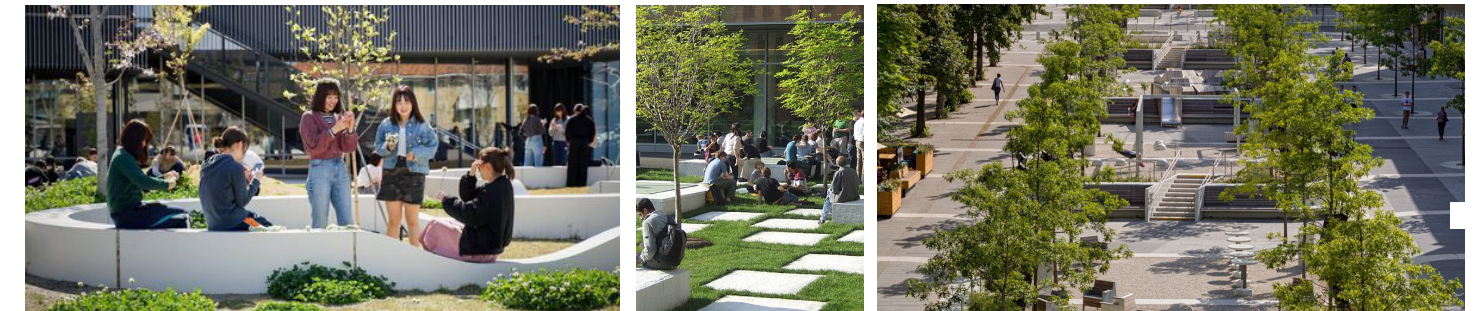
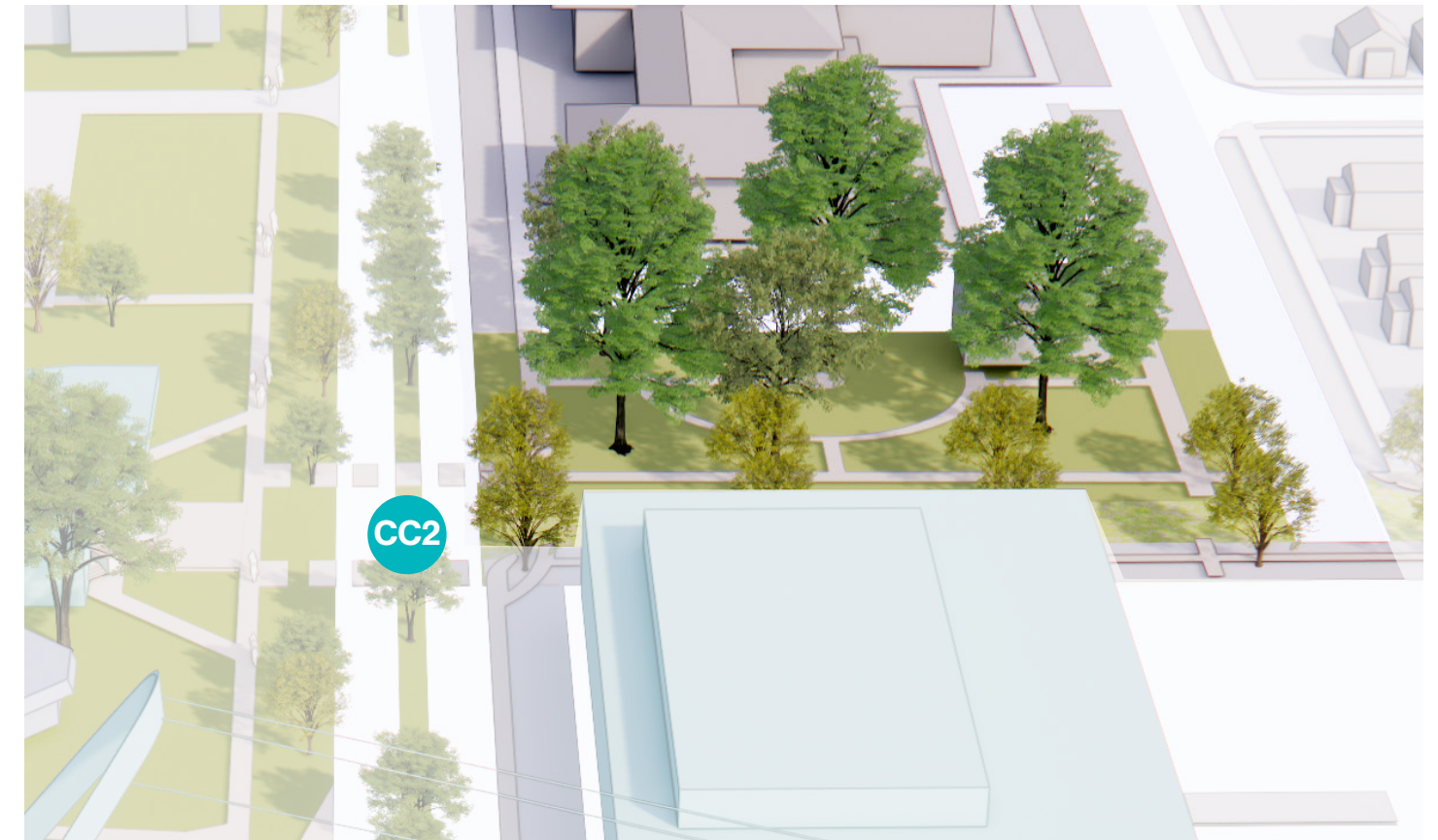
Expanding creative spaces for learning and engagement



The expansion of the Fine Arts Building will create a more welcoming and dynamic entry point for the arts on campus. A new light-filled lobby, paired with outdoor learning spaces, supports performances, exhibitions, and student gatherings while connecting creative disciplines to the daily rhythm of campus life. The design extends this energy outward, spilling onto Erie Street and engaging the community with the creative spirit of SC4. These improvements reinforce the building's role as both an academic hub and a cultural destination for the college and the broader region.

Bard Street Plaza (CC2)

Transforming Bard Street into a connected campus plaza

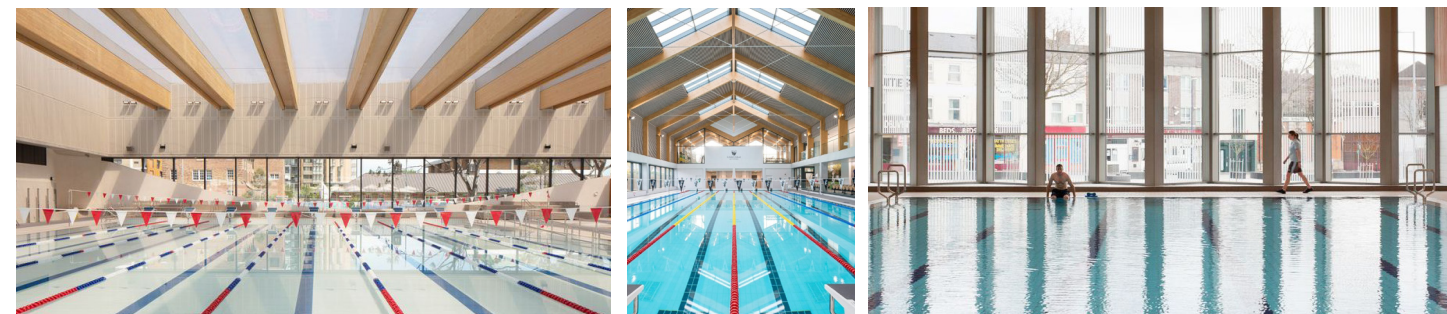
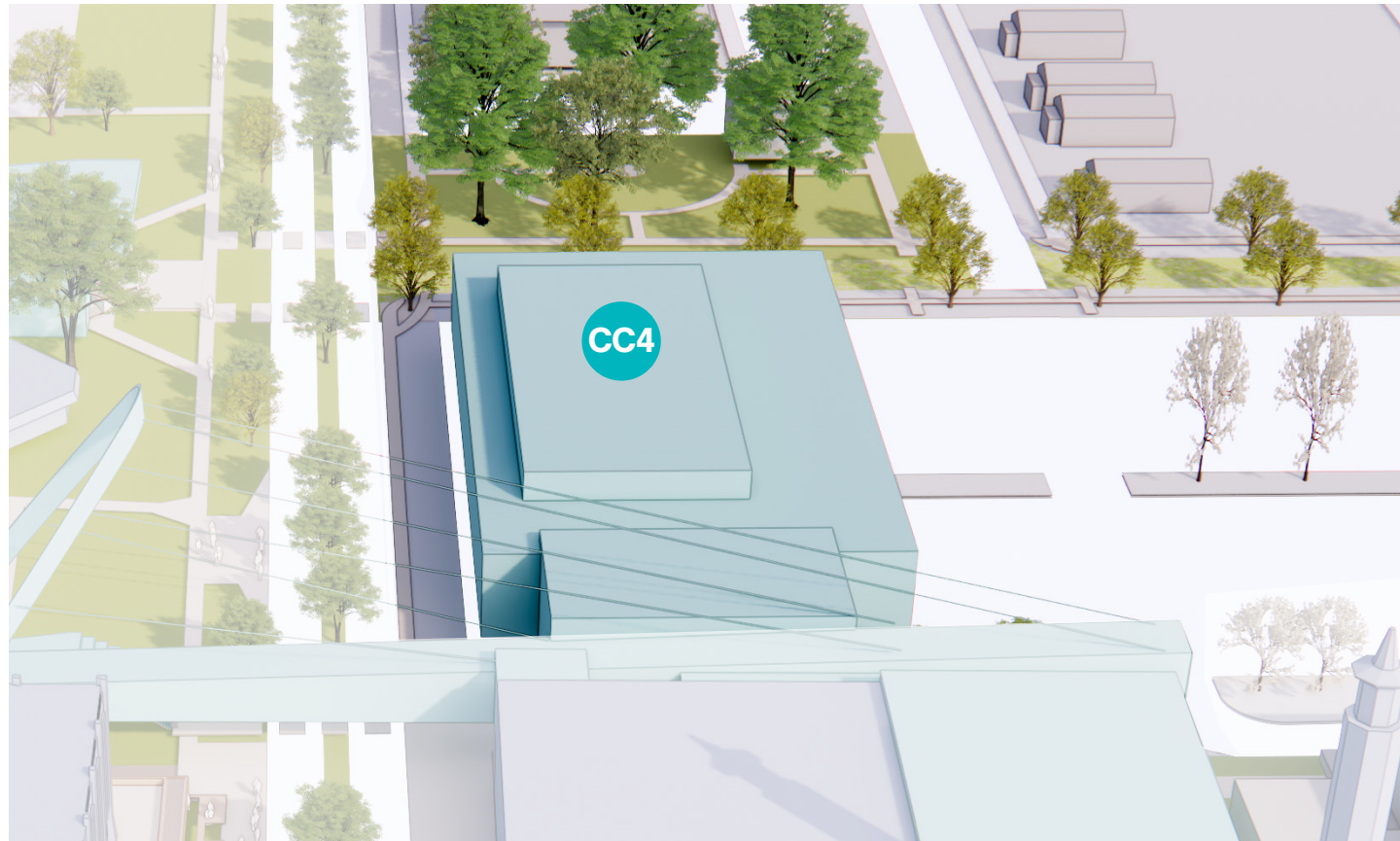


Transforming Bard Street into a vibrant campus plaza will strengthen connections between student housing and the heart of campus. Designed for flexible use, the plaza will feature outdoor classrooms, event space, and areas for socializing that invite both students and community members to gather.

Beyond circulation, the plaza will serve as a cultural and social bridge. By integrating landscaping, public art, and pedestrian-friendly design, Bard Street Plaza becomes a true connector—linking living, learning, and cultural life across SC4 while fostering meaningful engagement with the community.

Future Natatorium (CC4)

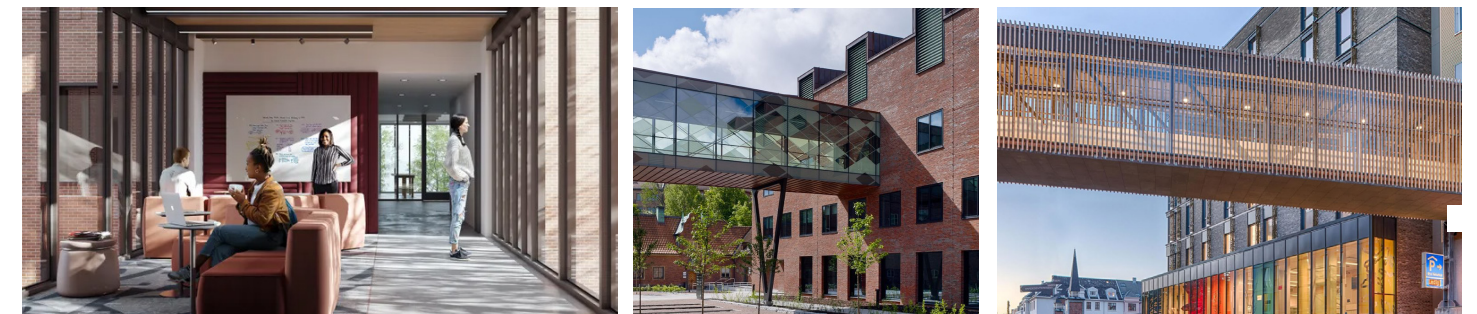
Expanding wellness through aquatic recreation



A new natatorium will expand SC4's recreation and wellness facilities, offering students and the community year-round access to aquatic fitness, training, and events. This addition strengthens the college's commitment to health and student life while providing a modern venue for athletics, recreation, and regional partnerships.

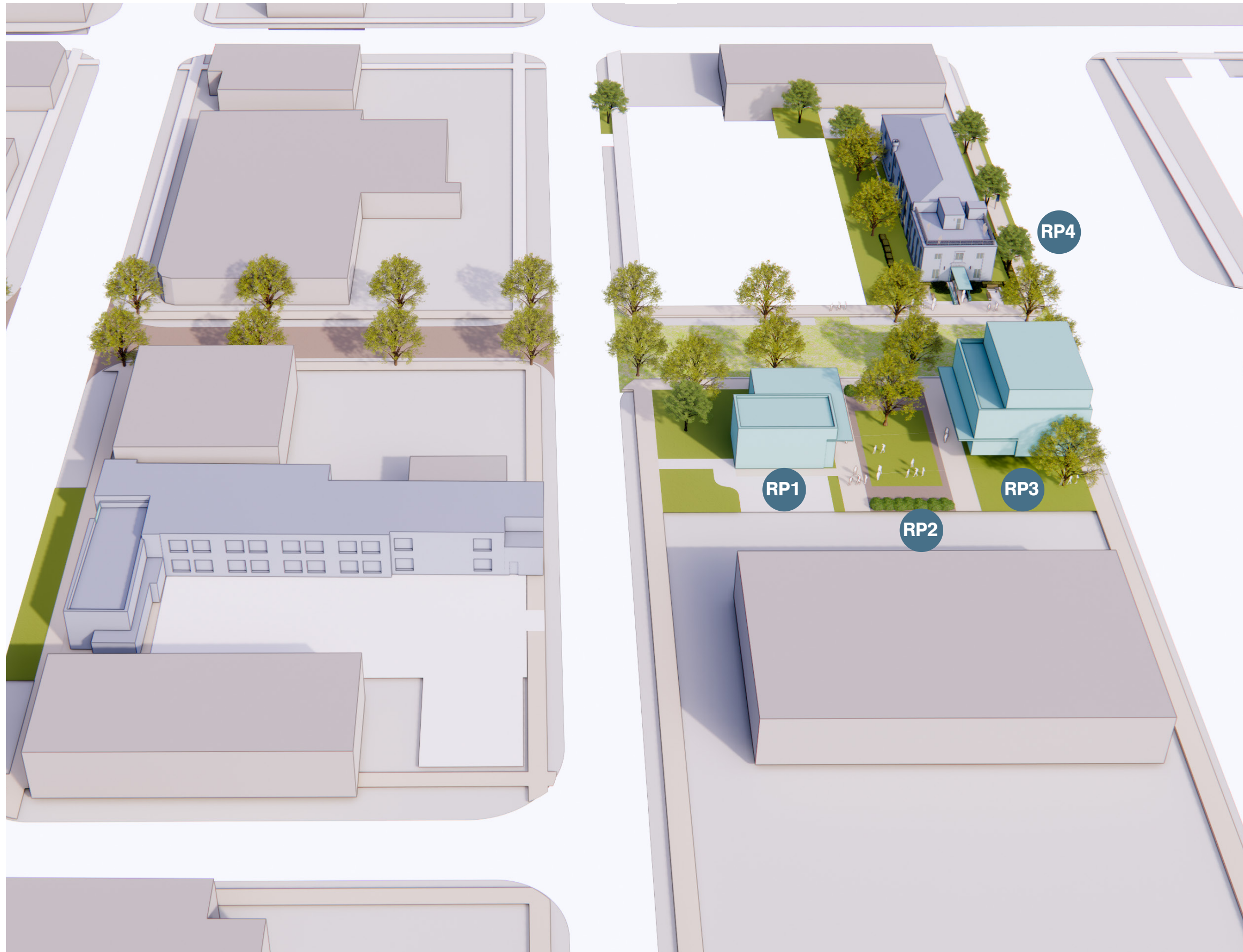
North Building/ Main Building Bridge (CC8)

Linking academic spaces and providing new views of campus



A pedestrian bridge linking the North Building and Main Building will improve circulation across campus and enhance accessibility. The bridge provides an all-weather connection between academic facilities, fosters collaboration across disciplines, and visually unifies the central campus.

A CONNECTED BARD ST. RESIDENTIAL PRECINCT



Making significant contributions to the growth of the College are its Student Housing initiatives in downtown Port Huron. The Huron Street Housing project of 2017, a converted motel, and Bard Street Housing project of 2023, a renovated senior living project, are both fully occupied and offer SC4 students housing security and the chance for an immersive undergraduate experience. The plan proposes building upon the success of these projects through adjacent building renovations and the creation of outdoor spaces that transform a group of individual projects into a new campus precinct for the college.

Beyond creating new places for students to gather, socialize and feel at home, the plan also highlights the larger transformation of Bard Street as a means of connecting this precinct back to the main SC4 campus. By pedestrianizing part of the street and introducing coordinated landscaping, wayfinding, and lighting along its entire length Bard Street can be a place where the College and City come together to celebrate this new and vibrant residential community.

A CONNECTED BARD ST. RESIDENTIAL PRECINCT

- RP1 Dental Program
- RP2 Shared Residential Commons
- RP3 Student Housing
- RP4 Bard Street Plaza

Bard Street Pedestrian Walk (RP4)

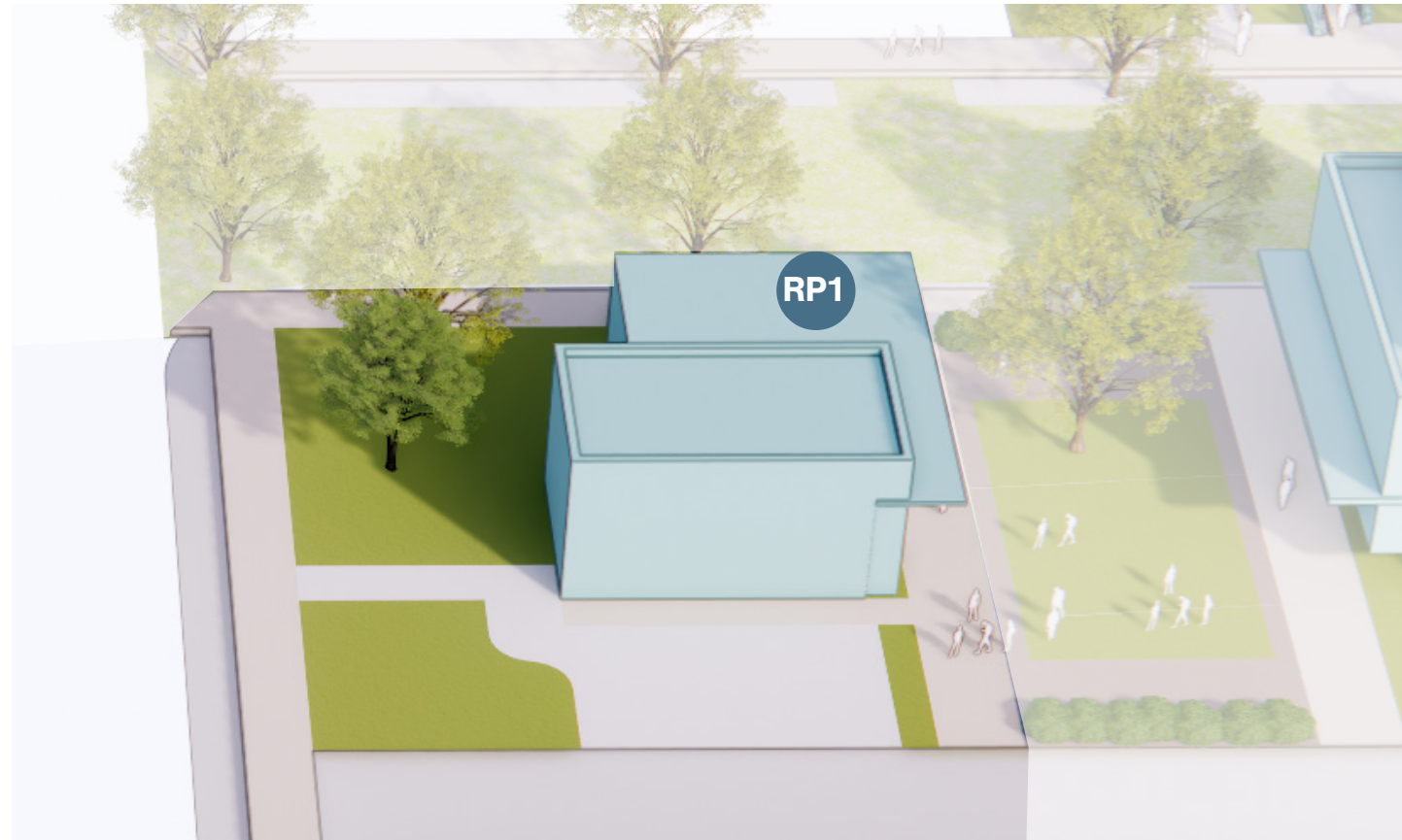
A walkable hub for living, learning, and gathering

To connect the residential precinct with the center of campus, the Plan envisions transforming Bard Street into a place for pedestrians along each of the east/west blocks between Erie Street and Fort Street. The westernmost block offers particularly exciting ways of connecting the lobby and outdoor spaces of the Fine Arts Building with a new pedestrian mall across the street, where event spaces are paired with outdoor classrooms, and paved parking for café seating and food trucks.



Dental Program (RP1)

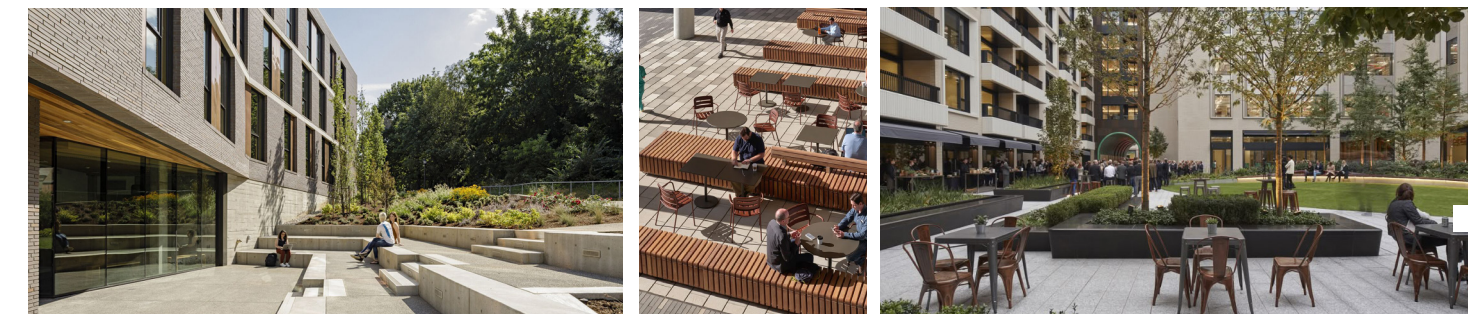
Advancing healthcare training on campus



A home for the College's new Dental Program will provide students with state-of-the-art facilities for hands-on learning while offering the community greater access to affordable dental care. Positioned along Bard Street, the program strengthens the college's role as a regional health resource and creates a visible symbol of SC4's investment in applied healthcare education.

Shared Residential Commons (RP2)

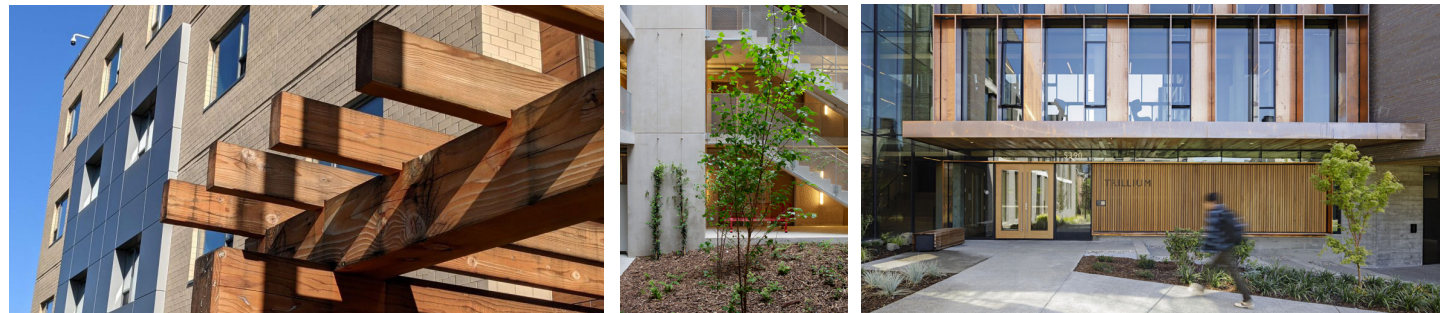
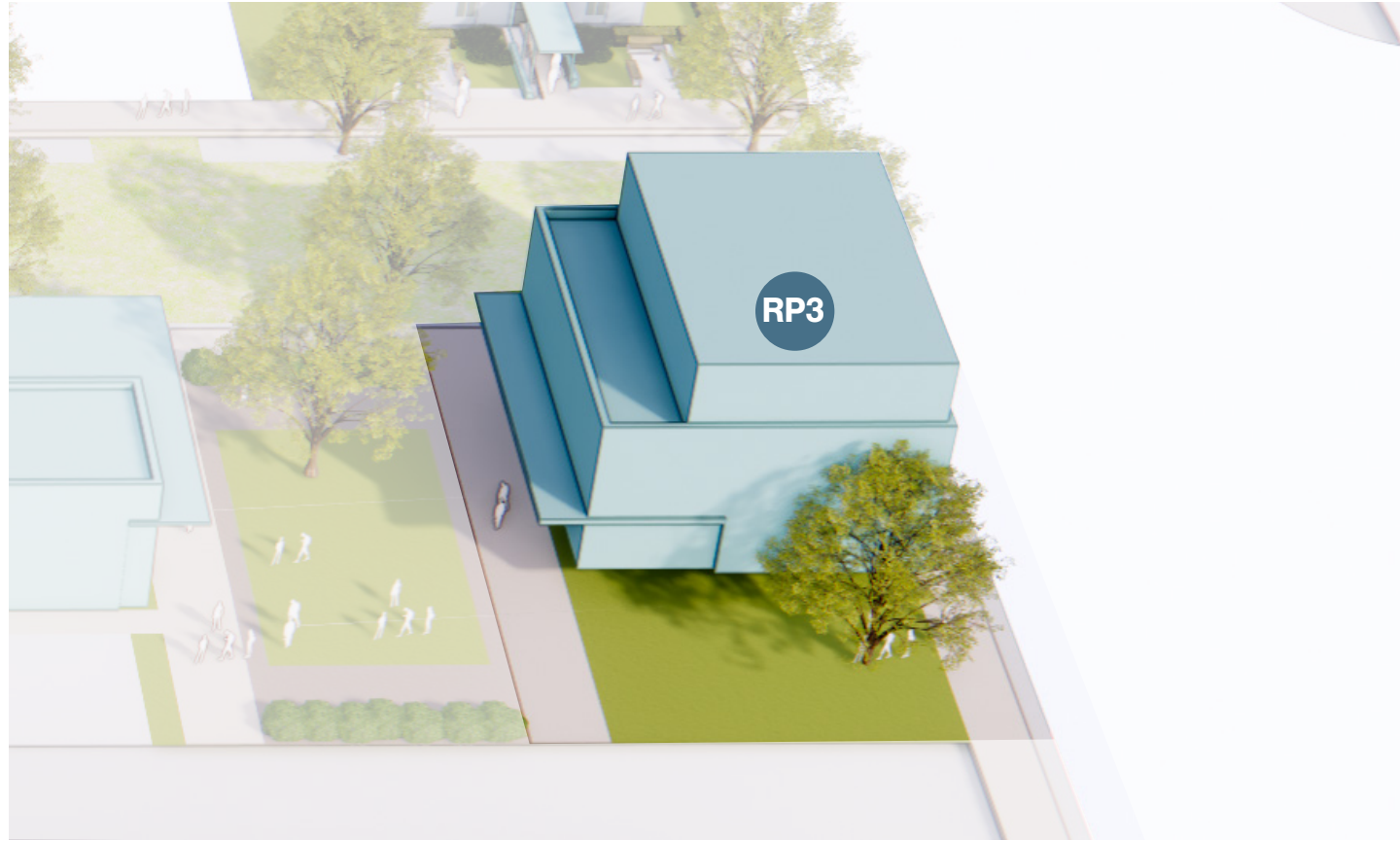
Creating vibrant spaces for student living



Positioned between the Dental Program and Student Housing, the Shared Residential Commons ties professional learning and residential life together. It invites students to gather, socialize, and collaborate. Its location reinforces the Bard Street precinct as a truly integrated living-learning environment where education, daily life, and community service intersect

Student Housing (RP3)

Fostering community through on-campus living



Adding additional housing along Bard Street builds on the success of SC4's existing residential projects, and creates a secure, supportive, and community-oriented living environments for students. Building additional floors above an existing mid-century building, the project offers the opportunity for new apartment-style housing offers a greater level of independence and meets the needs of students not yet met by existing facilities.



MEANINGFUL CAMPUS GATEWAYS



SC4's urban site and triangular site against the Black River create natural points of arrival on campus at each of its three corners. Meaningful campus gateways require appropriate wayfinding and orientation signs but also need the presence of students and views of and hopefully into important campus buildings to activate and celebrate the boundaries between the college and the surrounding city. Gateways should include outdoor gathering places with street furniture, sculptures and signs that incorporate College branding and encourage social media opportunities, and lighting and landscape that introduce standards that are repeated across campus.

The three major gateway opportunities at SC4 include its western edge, where Glenwood Avenue meets 10th Street, its northeastern edge where Glenwood Street and Erie Street meet and its southeaster edge where Erie Street crosses the Black River.

MEANINGFUL CAMPUS GATEWAYS

- CG1 College Gateway Sign
- CG2 Community Education Center
- CG3 Haynes Park
- CG4 Recreational Fields
- CG5 Stanton Street Plaza
- CG6 Street Crossing Improvements
- CG7 Residential Housing and Student Services
- CG8 Health Sciences Portal
- CG9 Main Building/ Health Sciences Building Bridge
- CG10 Campus Gateway / Parking Entrance
- CG11 Erie St. Median & Traffic Calming

Northwestern Campus Gateway

Celebrating recreation, health and community



College Gateway Sign (CG1)

A bold, welcoming sign at the intersection of Glenwood Avenue and 10th Avenue marks a clear point of arrival for the college. Highly visible from key approaches, this gateway element strengthens campus identity, improves wayfinding, and sets the tone for a vibrant experience that serves both students and the community.



Community Education Center (CG2)

The new Community Education Center will serve as a hub for lifelong learning, connecting residents with academic resources, workforce training, and cultural programming. Positioned at the heart of the gateway, it anchors the district and strengthens ties between the college and its neighbors.



Haynes Park (CG3)

This outdoor space brings together play, learning, and wellness. The playground offers safe, engaging areas for children while the community garden invites hands-on education and healthy living. Together, they foster intergenerational interaction and support active lifestyles.



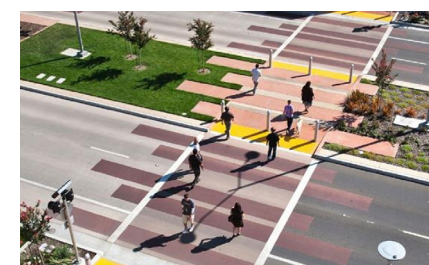
Recreational Fields (CG4)

Modernized athletic fields provide students and the community with flexible spaces for recreational activities. These fields encourage active lifestyles, host campus-wide events, and serve as a lively venue for intramural leagues, youth programs, and local partnerships.



Stanton Street Plaza (CG5)

A new public plaza along Stanton Street enhances the pedestrian experience with seating, landscaping, and gathering areas. This plaza strengthens the connection between campus and neighborhood, creating a welcoming environment for students, families, and visitors.

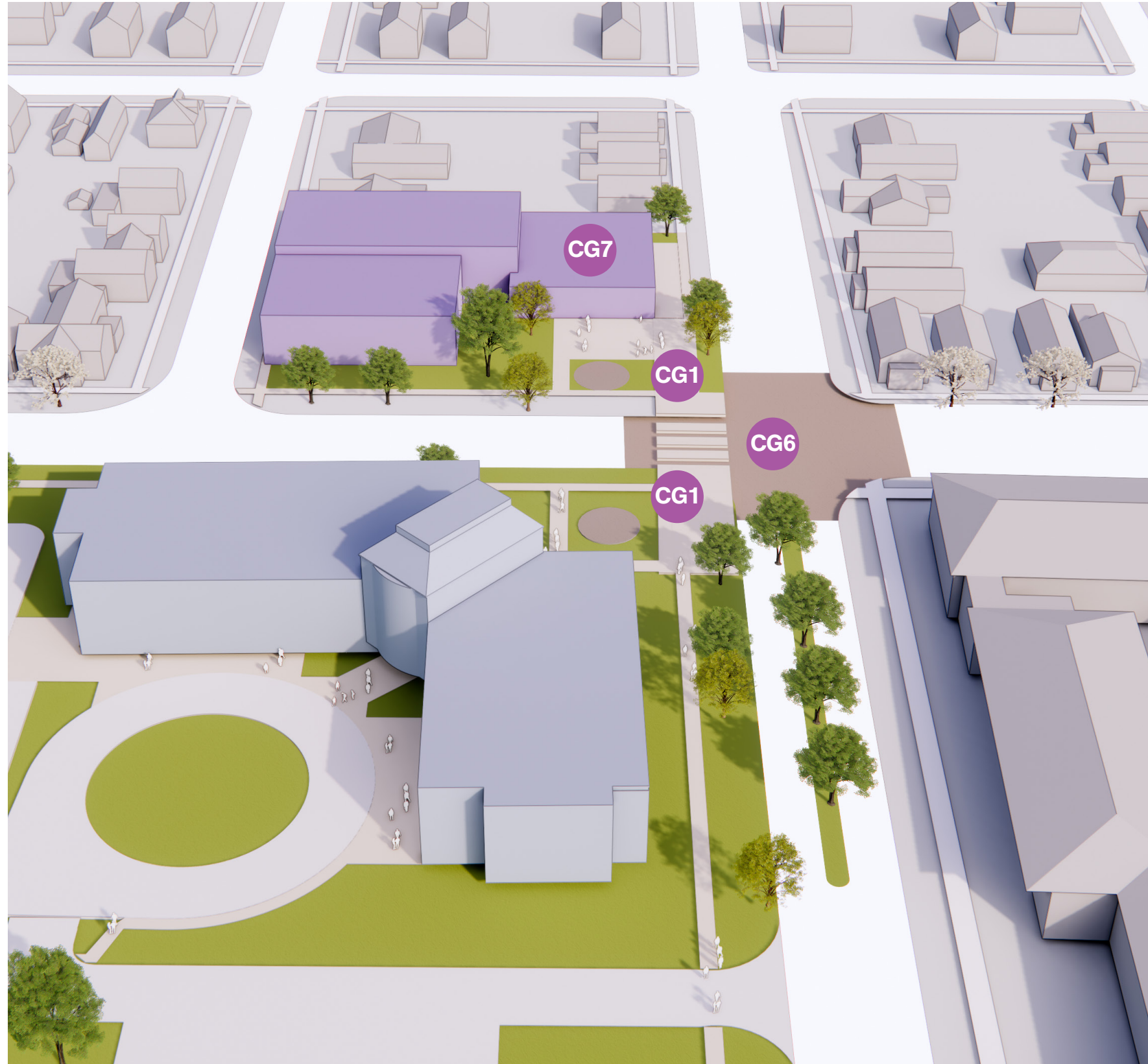


Street Crossing Improvements (CG6)

Safer, more visible street crossings along the gateway prioritize pedestrians and cyclists. Enhanced paving, lighting, and signage improve safety while also signaling entry into a cohesive, walkable campus district.

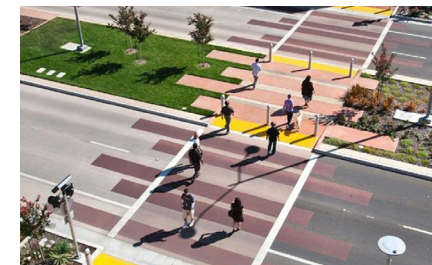
Northeastern Campus Gateway

Housing and student services surround vibrant urban spaces



College Gateway Sign (CG1)

A prominent gateway sign announces arrival to the northeastern edge of campus, enhancing visibility and identity along the corridor. Serving both students and visitors, the sign strengthens wayfinding and symbolizes the college's role as a landmark in the community.



Street Crossing Improvements (CG6)

Upgraded pedestrian crossings create safer, more inviting connections between campus and the surrounding neighborhoods. Improved paving, lighting, and traffic-calming measures prioritize students walking or biking to campus while highlighting the presence of a vibrant, people-focused district.

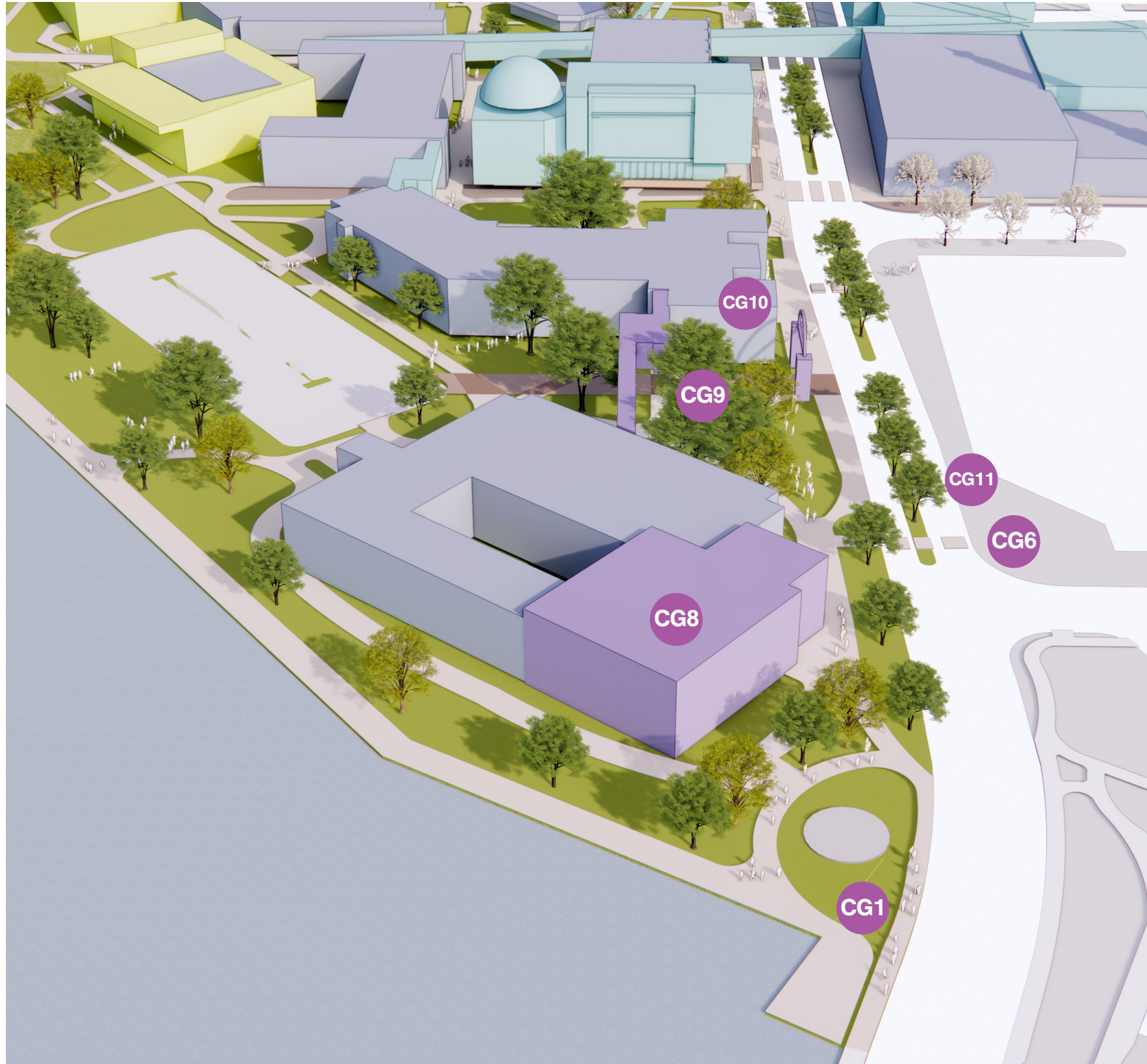


Residential Housing & Student Services (CG7)

New housing and student service facilities establish a strong residential anchor on the northeastern gateway. By providing convenient living, dining, and support services, this development fosters a 24/7 campus environment where students can live, learn, and connect in an active, supportive setting.

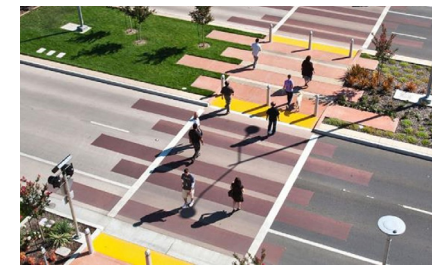
Southern Campus Gateway

Where campus traditions and future-facing programs meet



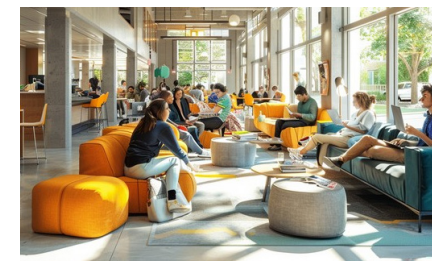
College Gateway Sign (CG1)

A landmark sign defines the southern arrival point, welcoming students, families, and visitors from the riverfront approach. It reinforces college identity, enhances visibility, and signals the connection between campus traditions and its evolving future.



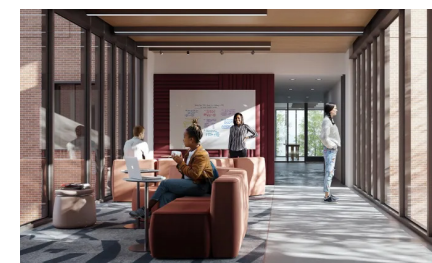
Street Crossing Improvements (CG6)

Safer, more intuitive street crossings improve the daily experience for pedestrians and cyclists. Enhanced paving, lighting, and visibility measures create a welcoming and secure edge to campus, emphasizing people-first design at this key gateway.



Health Sciences Portal (CG8)

A new entrance and plaza space at the Health Sciences building strengthens the identity of one of the college's programs. Designed as both a threshold and a gathering area, it celebrates academic excellence while providing students and visitors with a modern, active arrival experience.



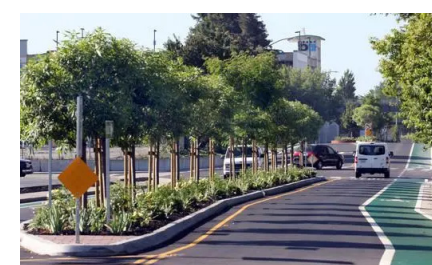
Main Building/Health Sciences Building Bridge (CG9)

A pedestrian bridge links the Main Building and the Health Sciences Building, improving circulation and accessibility. This connection fosters collaboration across disciplines, creates sheltered movement between facilities, and visually unites the southern gateway.



Campus Gateway / Parking Entrance (CG10)

A redesigned parking entry enhances arrival by car, with improved orientation, signage, and landscaping. This gateway creates a more intuitive transition from vehicle to campus, aligning with the broader effort to establish cohesive, welcoming arrival points.



Erie Street Median & Traffic Calming (CG11)

Landscape improvements and traffic-calming features along Erie Street prioritize pedestrian safety and beautify the campus edge. The addition of planted medians, lighting, and crosswalk enhancements creates a safer, greener, and more unified corridor.

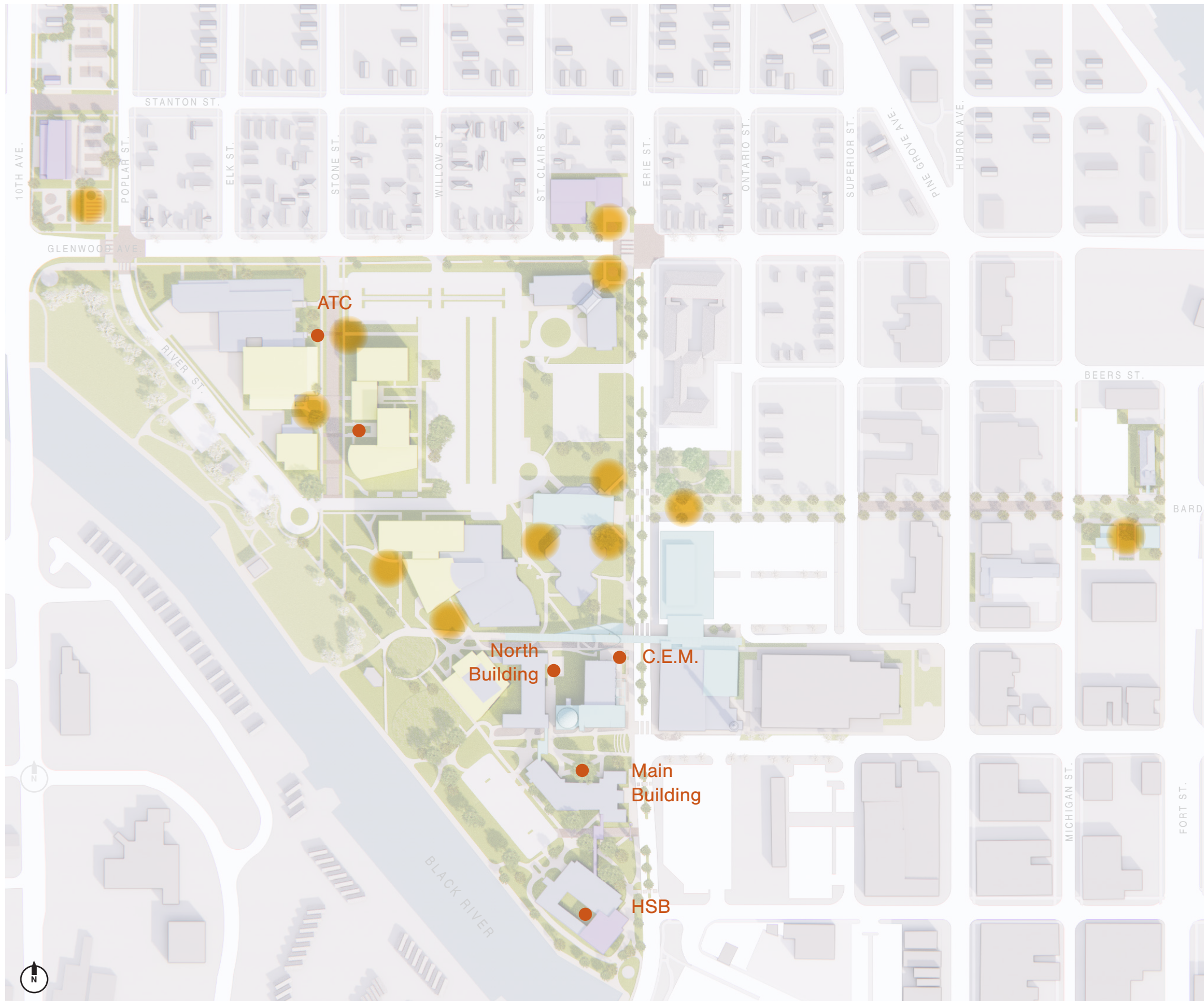
Guidelines & Standards

Connecting the campus through landscape, learning and infrastructure.

Successfully implementing the vision of the Facilities Master Plan requires careful attention to how the programs and places on campus are knit together through vibrant and useful outdoor spaces and how the campus engages with the surrounding city along its edges through the design of safe, multi-modal streets for pedestrians, bicyclists, and vehicles.



Outdoor Learning



In conversation with campus stakeholders, we heard that students want more options for spending time outdoors, not only beautiful landscaped open spaces and paths but specifically programmed areas for gathering, recreation and learning. Beyond specific recommendations for individual locations on campus, the plan identifies a network of two types of open spaces to better address student needs.

The first locates furnishings and outdoor environments near the entrances of academic buildings to foster cohort building among students in individual programs. The second proposes locations for outdoor classrooms of varying scales and designs for use by the entire campus community.

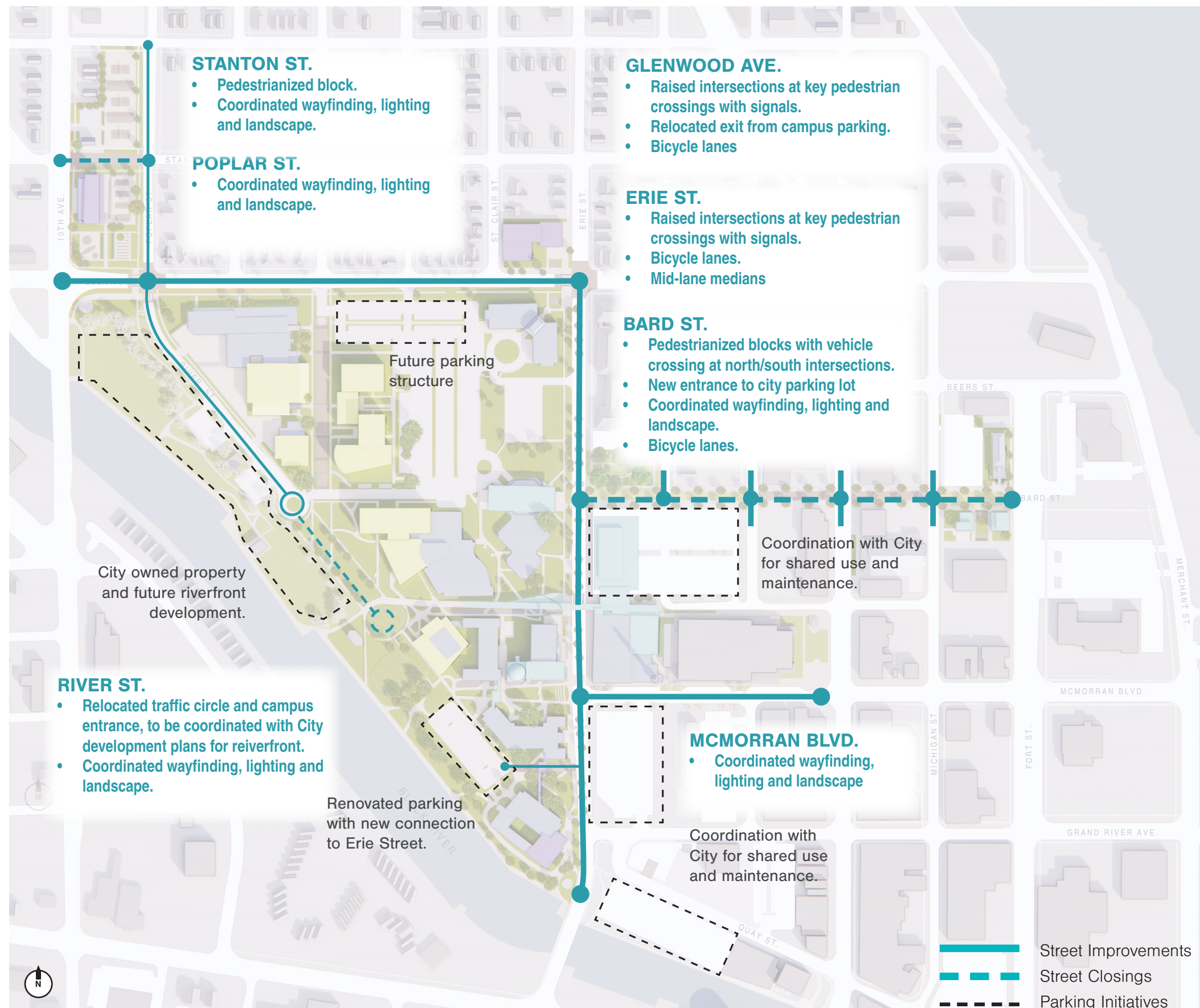
● Cohort Building Outdoor Spaces



● Outdoor Classrooms & Gathering

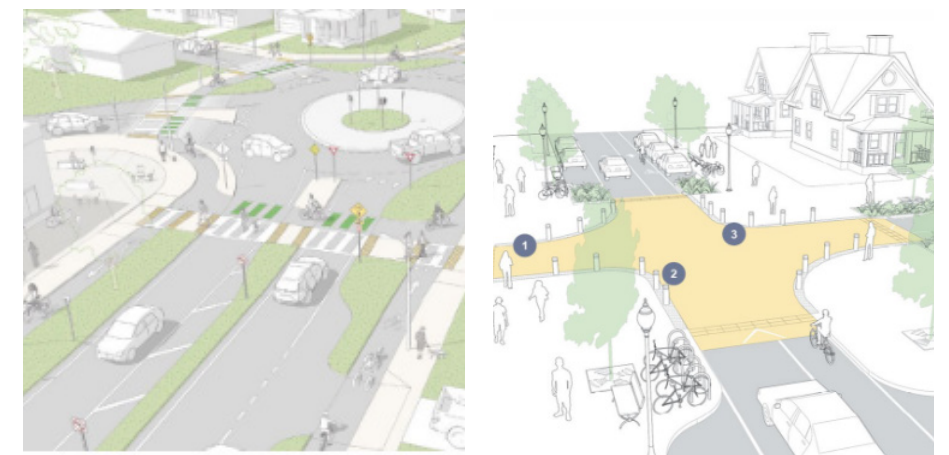


Connections and Infrastructure



To implement many of this plan's initiatives to better connect the College to the city of which it's a part, SC4 will have to work closely not only with its internal stakeholders but with the city leadership, planning officials and engineering staff to realize the potential of its vision. Designing appropriate street calming measures to ensure pedestrian and bicyclist safety along its edge cannot be accomplished by the College alone. The Plan also encourages ongoing communication between the College and City to find ways to effectively manage their respective parking resources and to increase collaboration to ensure they appropriately meet both everyday needs and the demands of peak events.

The College has already begun these conversations, introducing its vision for the future and reconciling it with the City's own priorities and projects.



What's Next: Turning Vision Into Action



Looking ahead, this plan serves as a call to action — a commitment to share the vision with the community, build excitement for the College and its programs, and implement initiatives that respond to the emerging needs of people and programs on campus.

The plan grows out of the nested relationship between SC4 and Port Huron and depends upon that critical relationship to build projects that improve both the College campus while improving opportunities for all residents of the City and region. A similar commitment to place grounds the College's engagement with its community.

Planning will continue in collaboration with campus and contractor partners to assess and improve existing facilities, ensuring that every investment strengthens the student experience. At the same time, ongoing engagement with academic stakeholders will help identify priorities for individual programs and integrate them into future campus projects.

The work is never done. The Facilities Master Plan is a flexible document that leaves room for future changes at the College and in its community, but its planning principles, themes and vision offer a benchmark to ensure that new ideas for the campus build upon what makes SC4 and the education it offers so special.

Together, these efforts ensure that SC4 continues to evolve with purpose, energy, and a deep connection to the community.



weareprogressive.com